

2021

COVID-19 IMPACT SURVEY

Let your employees know you care.



WAYS TO JOIN

- A** We administer and manage the survey for you using the **Tritonlytics survey platform**. We provide the data for analysis and report summary.
- B** We build the survey for you in **Qualtrics** and you send the survey using your Qualtrics account. Send us the data for analysis and report summary.
- C** We provide you with the survey questions and you use **your own survey platform** (Qualtrics or other). Send us the data for analysis and report summary.

Contact tritonlytics@ucsd.edu for more information.

UC San Diego

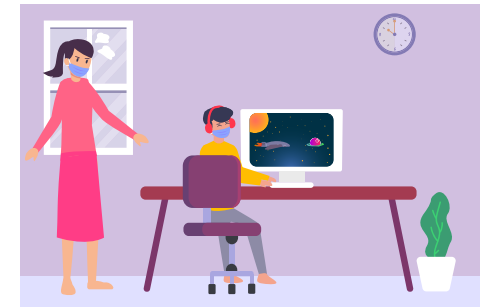
LESSONS LEARNED FROM THE PANDEMIC

REIMAGINING THE WORKPLACE



Understanding that remote work has been successful and that there is a strong desire for continued remote options, a committee dedicated to re-envisioning a new way to work has been looking into ways to promote a more **flexible work culture** going forward.

Knowing that the top challenge for staff and faculty is schooling for K-12 children, many departments have adopted “**zoom-free**” times and have adjusted their office hours.



Learning that two-way and regular communication was critical, weekly **town halls** have been instituted related to COVID-19 and its impact on work, teaching, and learning.

To view results from the 2020 COVID-19 Impact Survey, please visit tritonlytics.ucsd.edu.

BENEFITS

Understand the **impact** of COVID-19 on your faculty, staff, and students' work and well-being.

Gain insights on how to **stay connected** and obtain meaningful data to anticipate needs and guide priorities.

PARTNERSHIP

Survey is **FREE** of charge in the spirit of partnership and community during these unprecedented times.

We ask that you share your **best practices** with each other.

We will create a **benchmark** report that will highlight trends and themes and will be made available to all participating universities.

TIMELINE

